



The Buzz

Newsletter of the Iowa Honey Producers Association



October 2010

98th IHPA Annual Meeting Nov. 5 & 6 Pgs. 7-11
Iowa State Fair 2010 Results and Photos Pgs. 6 & 12
Beekeeper of the Month David Irvin Pg. 5





Dates To Bee Remembered

November 4, 2010 Board Meeting 7 pm Best Western Regency Inn, Marshalltown, IA

November 5th & 6th Annual Meeting Best Western Regency Inn, Marshalltown



For Sale: Pine Hive Components. 9 5/8" Boxes \$16, 6 5/8" Boxes \$14, reversible screened bottom boards \$14 (solid bottom boards \$13), telescoping cover \$16. Painted, handholds, and bee space compatible with commercial woodenware. Glued with Titebond II and screwed, simple butt joints.

Contact: Josh Sommers
(641) 658-2213

FOR SALE BEE KEEPING EQUIPMENT

Contact: Phill Seidl
Conservator for Gerald Hazeltine
Seidl & Chicchelly Law Firm, P.L.C.
229 Northland Court N.E.
Cedar Rapids, IA. 52402
(Cdutton@sandclawfirm.com)
(319) 377-9770

Sale Items

2 Full 55 Gallon Barrels of Honey (Fair Market Price), 30 Lbs. of Bees Wax, 7 Pairs of Bees Wax Candles, 80 White Small Honey Buckets, Honey jars (300 (5lb) Jars, 204 (22.75oz) Jars, 84 (4lb) Jars, 36 (1lb) Jars), 697 Hive Boxes, 5576 Frames. 4 Hive Tools, 1 Extractor, 1 Uncapping Tank, 1 Strainer, 1 Storage Tank, 4 Smokers & Other Miscellaneous Bee Keeping Tools. All offers considered & no reasonable offer will be refused.

NOTE: All bee's & bee keeping equipment have been inspected by the Iowa State Bee Inspector Boyd Palmer and are without disease.

FOR SALE: Good Used Bee Equipment

- #8 Hive Bodies with 10 frames
 - #5 Illinois Supers with 10 frames
 - #6 Galvanized Top Covers
 - #6 Inner Covers (wood)
 - #2 Shallow comb supers
 - #5 Bee Excluders (maze)
 - #5 Queen Excluders (screen)
 - #1 Kelly Stainless Steel 2 frame extractor with motor & stand (like new)
 - #1 Colony of bees in 2 story hive with 2 Illinois Supers
- Miscellaneous supplies and equipment for beginner
\$600 for everything

Robert Nolan 563-355-2163
Davenport

FOR SALE: FOR SALE: Manual loading Cowen uncapper with conveyor chain. Only used on 40 barrels of honey--\$7500. New price was \$10,000. Also for sale are 2 gallon feeder pails at 50 cents each.

Contact Dick Blake at 712-246-3412

For Sale: Better Way Wax Melter that was made in Altoona IA. It is 27" wide, 46" long 24" high and has a 9" stand. \$200.00

Curtis Barnhart
Phone 319 480-4209 Monticello IA

The Buzz Newsletter Article Submissions and IHPA Memberships

Please send submissions, classified ads, and photos to Alex W. Ebert by email to TheBuzz@ABuzzAboutBees.com or by mail to The Buzz, c/o Phil Ebert, 14808 S. 102nd Ave. E., Lynnville, IA 50153. **The deadline for submissions is the 15th of each month to be included in the following month's newsletter.** The Buzz is a monthly newsletter published by the Iowa Honey Producers Association which is an affiliate of the Iowa State Horticultural Society. IHPA Membership is only \$10 annually. To join IHPA and receive your complimentary member subscription to The Buzz Newsletter, please contact Melanie Bower, IHPA Treasurer, 207 S.E. Diehl, Des Moines, IA 50315, Phone: (515) 287-6542

Greetings from the President of the IHPA

Dear Honey Producers,

I just read an article on the back cover of *Our Iowa* magazine about living in Iowa that really seems very true. "You know you're from Iowa if...you often switch the thermostat from Heat to AC in the same day, and back again." (You can see how far behind I am, it was the August/September issue.) It is that time of year when I load my car with warm clothes, really warm clothes and summer weight clothes just to attend a farmers' market. I have a special spot in the car just for "extra" clothes. It gets really miserable standing in the cold and wind for 3 or 4 hours if I don't have enough clothes. Sometimes the patrons think I am crazy wearing my winter coat and gloves. They just dash to the market, get their produce or honey and then get back into their warm cars and go to their warm homes.

The Iowa State Fair is history for another year. Thank you to everyone who took time out of a very busy schedule to work for the IHPA to help raise money for our organization. There were a few days that we had too many people and other days with not quite enough people. Several circumstances created these issues. The attendance was way down at the fair this year, so we had extra people working with fewer attendees visiting the IHPA booth. Some workers had changes unexpectedly come up, so we were short on workers because of that also. The days sure seemed long again this year. I arrived at the building before 8 in the morning and most days didn't leave until 10 pm. Several highlights of the fair were—we had enough comb honey for the entire fair, we had plenty of lemon juice and we did take in more money than the previous year. The 2009 fair gross income was an all time high for us. I was certainly worried that we were in serious trouble matching that amount with the attendance down, but with our products and great prices, the fairgoers patronized us and purchased lots of honey lemonade,

honey and beeswax products. A more detailed report will be given at the Annual Meeting along with some of the bizarre questions that we were asked by attendees. Thanks again to all of the volunteers and a special thanks to Melanie and Duane, to Louise, Regina and Amber, and to Diane and Laura.

Are all of your hives ready for winter? Check out the October tips article to make sure you get them ready for winter. Did I actually say winter! After last year, I am not prepared for another one like it. Let's hope it is a better one.

Get your reservations made for the Annual Meeting. Don't forget to bring those outstanding photos you have taken, your prized Mead and your favorite recipes for the annual contests. Information and rules are included elsewhere in this issue. The Annual Meeting is a great place to get up-to-date information about beekeeping, talk to fellow beekeepers, discuss all of the issues facing beekeeping, pick up equipment and supplies from the vendors, meet new friends and have a great time. Don't miss it. For more information concerning registration contact Melanie Bower or for information concerning the meeting contact Pat Randol.

Now is also the time to help OUR organization by volunteering to be a board member or officer in the IHPA. Consider running for office to help spread the work around to everyone.

There is another article that needs particular mention. We all need a reminder that comb (beeswax) included in old equipment needs to be inspected to be sold in Iowa. I know how tempting and convenient it is to purchase some used equipment from another beekeeper without an inspection, but there is the possibility of the spread of disease by doing so. We are in precarious times with the mortality of honey bees anyway, why take the chance. Contact Andy Joseph, Delmar Nelson

or Boyd Palmer to have your bees and equipment inspected. The rules and regulations are listed in "Iowa rules and laws" for a reason. Remember if you take honey bees from Iowa to another state, they also need to be inspected. If you know of a beekeeper in your area that is not a member of the IHPA, please encourage them to become a member so that they are aware of the rules and regulations concerning beekeeping. Registering hive locations is also another tool for beekeepers to use to protect themselves and our precious honey bees.

We are gearing up for another class of youth scholars. There is a need for mentors to get these young adults prepared to become beekeepers. Please let Mike Brahms know if you would be interested in sharing your knowledge with a young person. The mentors get as much out of the program as the youngsters do. Please consider helping.

We would like to offer the frozen lemon juice to make honey lemonade to our members. If you are interested in purchasing some lemon juice, please contact Melanie Bower or Donna Brahms. The lemon juice is frozen, so it is stored in a freezer at 3 Bee Farms, Mike and Donna Brahms business near Griswold. We will have a discussion about it at the annual meeting, so be thinking if you could utilize this selling tool for your business or organization.

"Bee" prepared for the coming season change. Prepare hives and equipment. Enjoy the fall colors, the Indian summer and above all, spend quality time with your loved ones.

Sincerely,

Donna Brahms



Iowa Code Includes Beekeeping

Did you know that beekeeping in Iowa is included in the Iowa Code? The Iowa Code is the listing of the laws that the legislature has passed concerning every topic imaginable. Beekeeping is included. If you are interested you can go to the Iowa Code web page and look for beekeeping references.

<http://www.legis.state.ia.us/Code.html>

There are listings for the State Apiarist duties and requirements, the exemption of honey from the food code inspection process for sales of honey to grocery stores, the interstate travel of honey bees, (you need to have your hives inspected to remove them from the state) and there are rules governing the sale of frames of wax to try to control the spread of diseases from one beekeeper to another. If you are selling hive bodies and they contain drawn comb, the comb needs to be inspected. These rules are in effect to protect the beekeepers of the state and to control the spread of diseases such as American foul brood from one beekeeper to another. That is why there is an inspection program administered by the Agriculture Department. If you have any questions concerning the inspection rules, please contact our State Apiarist, Andy Joseph at IDALS.

Andrew Joseph
Office of the State Apiarist
Iowa Laboratory Facility
2230 South Ankeny Blvd.
Ankeny, IA 50023
Andrew.joseph@iowaagriculture.gov
(515)725-1481



October Tips for the Beekeeping Year

Are your bees ready for winter? You might want to consider the following:

- Apply either **terramycin powder** or patties as an American Foul Brood preventative.
- Wrap your hives with the hive wrap of your choice. Remember that the honey bees need to be able to exit the hive during warmer weather for cleansing flights, don't wrap them too tight, leave an escape route. Note: Honey bees keep the hive around 90 degrees winter

WEAVER'S famous QUEENS and Package Bees

★ Buckfast ★ All-American

Order On-Line Now

Visit us on the Web at www.rweaver.com

THE R WEAVER APIARIES, INC.

16495 CR 319, Navasota, TX 77868

Ph: 936/825-2333 rweaver@rweaver.com

- and summer, wrapping them too tightly might result in suffocation.
- Ensure that they have enough reserves for winter. Feed the bees as needed.
- Place a small stick or pebble (about 1/16" thick) under the inner cover to vent the hive. Moisture is one of the major problems for a hive during winter months.
- If you haven't installed your entrance reducers, do so now. They help keep rodents out of the hive.
- If you are not wrapping your hives, move the colonies to their protected winter location, usually facing south.

- Register for the Annual meeting. Many helpful tips can be obtained by attending the Annual Meeting of the Iowa Honey Producers Association on November 5th and 6th in Marshalltown at the Best Western Regency Inn. Fellowship results in many different options for keeping honey bees.
- Bring your award-winning photos, your outstanding honey foods and any mead or wine that you make to the Annual meeting for the contests between members. It is great fun to see the photos, taste the scrumptious food and to sip the different meads that our members offer.

- Consider becoming a mentor for the IHPA youth scholarship beekeeping program. Contact Mike Brahms, (712) 778-4255 or mbrahms@netins.net to volunteer. We need you to let us know that you would be willing to guide a young person in learning the skills necessary to become a beekeeper. The youth are the future of this organization.

The Beeyard Report

Stephanie Pomeroy came by our stand in Mt Pleasant with her daughter Heather. Those of you that have been around the IHPA for a while will remember that Heather was one of our first honey queens. My memory is hazy but I think Ginger Iles was the first and Heather was after her. This would have been in the early 90's. Heather recently moved to DC area of Virginia from Pennsylvania with her husband and two children. Her husband is a youth pastor at one of the churches. She was quite gracious but I have a feeling she didn't have clue who I was. I wasn't very active in the Honey Producers when she was queen. We had a great time in Mt Pleasant but I came home sick. It's a week of inhaling dirt and smoke. I always get a sore throat. This year it progressed beyond that. It took me a week

to get over it.

It's a horse race this time of year to get the honey off and the mite treatments in. The boys started cleaning the yards off in August but it will be the last week of September before we get our last two yards pulled. We have seen a few hive beetles in the honey house but we haven't had a problem with them. As long as we get everything extracted within a week of bringing it in, the beetles stay under control. We used to bring everything in and stack it up and the warehouse. We would extract when we got around to it. That doesn't work any more.

We have had a few colonies crash from mites but the bees look pretty good overall. We are also seeing a number of queenless colonies. If we find them in time, we will use those boxes to double up some of the singles. We had around 200 colonies that were in single brood boxes. We are going to have quite a few that will wind up as 1 1/2 story. We don't have enough deep boxes to go around. It takes a lot of syrup to get the singles up to weight after we double them.

I thought our crop would make 80 barrels easily but that last few yards haven't yielded much. May was the honey month. The overwintered colonies that were in good shape made 120#. The splits made very little. Our overall average is going to be in the 75# to 80# range.

The equipment that I bought at auctions in the early 90's is beginning to disintegrate. I have a pile that is too good to burn but not good enough to use. I need to do something with it. We are in the process of converting to 4-way pallets and migratory lids.

Our queen mating yard is just over the hill from our building. By the end of the summer there are a lot of bees back there. If we are extracting and the bloom is gone, they come for the building in earnest.

There is no place they can't get into. I

have a big screen door I put in place of the rollup door in the summer time. When things are really bad, that whole screen gets covered with bees. I used to have a honey tank on that side of the building so I couldn't let the bees come and go freely.

We had to put up with the chaos. We moved the honey tank last year so now I can just open the door when they get bad. I let them have a few empties to clean up. Then they go home and don't come back unless I mess up and leave something exposed that they want.

As the queens sell down in the fall, we use the bees to make up new colonies. This starts around the end of August and goes on until late September. Our mating nucs have full sized frames so we just unite the bees and frames into a standard hive body. We will get 30 or 40 colonies out of the mating yard. It is a good way to increase the colony count.

Last year was the first winter we were able to winter these colonies. Was this just a lucky break? We will find out in the spring.

Submitted by Phil Ebert



Buzz Newsletter

In order to have an Iowa Honey Producers newsletter, the members of this organization need to help with the articles. I am in need of beekeepers who would like to be a featured beekeeper of the month or know of someone who would like to be featured. Please contact: Ron Wehr, 2270 Juniper Ave., Keota, Iowa 52248 or call 319-698-7542. Thank you.

Submitted by Ron Wehr

Featured Beekeeper of the Month

This month our featured beekeeper is David Irvin. He lives in Iowa City, Iowa and his profession is general contractor, carpenter. After doing a couple years of bee removal for people he decided to start really keeping bees in 1989. He has 10 colonies of bees and is expecting a good crop this year. His honey sales are out of his home, and he has his hives inside the city limits.



Dave is a member of the Iowa Honey Producers Association. He is president of the East Central Iowa Beekeepers, a group of about 60 members. They meet in March, June, September, and December. Dave says they are planning to show a video on bee emergencies this September. The group makes a display on beekeeping at the Johnson County Fair, Ag Fest, Hoover Fest and Prairie Preview. They are always promoting beekeeping and recruiting members.

Dave enjoys talking to children about beekeeping, going to schools and programs in parks. In the winter he spends time getting ready for the next season.

One interesting thing Dave does is use a bee vacuum to remove bees. This year he has had some practice removing bees from a 3 story house a couple of times. It seems he has to go up on the roof and research over the side to vacuum them up. That's something to watch!

Thanks for your interesting story about your beekeeping experiences. It's a good thing you aren't afraid of heights.

Submitted by Ron Wehr

2010 Iowa State Fair

I would like to thank the Iowa Honey Producers, the Iowa Honey Queen, Amber Connett, volunteers in the booth, Larry Spina for letting us use his bobble head and collapsible hive, and everyone who had entries in the 2010 Iowa State Fair. Your participation is what makes the Apiary Division such a success.

Listed below are the results of the judging for the Apiary Division for 2010. There were 31 exhibitors with a total of 124 entries.

CLASS	1st	2nd	3rd	4th	5th	6th
1	Mark Tintjer	Matthew Stewart	Pat & Peggy Ennis	Delmar Nelson		
2	Mark Tintjer					
3	Mark Tintjer	Tim Laughlin	Matthew Stewart			
4	Tim Weese	Mark Tintjer	Michael Barnard	Brittany Barnard	Tim Laughlin	Matthew Stewart
5		Matthew Stewart				
6	Matthew Stewart	Phil Ebert				
7	Mark Tintjer	Matthew Stewart				
8	Mark Tintjer	Phil Ebert	Pat & Peggy Ennis			
9	Tim Laughlin	Michael Barnard	Mark Tintjer	Brittany Barnard	Kevin Mogle	Phil Ebert
10	Matthew Stewart	Tim Laughlin				
11	Matthew Stewart	Pat Randol	Mark Tintjer	Tim Laughlin		
12	Dennis Nielson	Adam Nielson	Isaac Sedlmayr	Kevin Mogle	Phil Ebert	Mark Sedlmayr
13	Phil Ebert	Mark Tintjer	Kevin Mogle	Marlene Mogle	Pat & Peggy Ennis	
14	Pat & Peggy Ennis	Mark Tintjer	Phil Ebert	Bob Wolff		
15	Mark Tintjer	Matthew Stewart				
16	Jackie Beard	Pat & Peggy Ennis	Deb Nielson	Marcus Samson	Randy Beard	Amber Connett
17	Jackie Beard	Amy Endres	Mark Sedlmayr	Deb Nielson	Amber Connett	Isaac Sedlmayr
18	Pat & Peggy Ennis	Mark Tintjer				
19	Mark Tintjer	Pat & Peggy Ennis	Phil Ebert	Matthew Stewart	Isaac Sedlmayr	
20	Pat & Peggy Ennis					
21	Pat & Peggy Ennis					
22	Michael Barnard	Greg Beard	Renaë Beard			
23	Renaë Beard	Greg Beard				
24	Renaë Beard	Greg Beard				

Special Awards:

Sweepstakes Plaque awarded by the Iowa Honey Producers Association:

Mark Tintjer

Dadant & Sons Award:

Tim Weese

Iowa Honey Producers Award to top twelve winners, marked queen in hive:

Mark Tintjer

Matthew Stewart

Pat & Peggy Ennis

Delmar Nelson

Mark Tintjer

Dennis Nielson

Mark Tintjer

Mark Tintjer

Michael Barnard

C. F. Koehnen & Sons Award:

Draper's Super Bee Award:

Herman Bickle Award:

Lapp's Bee Supply Award:

B & B Honey Farm Award:

See you next year at the 2011 Iowa State Fair!

In Class 11, Flavored Creamed Honey, the winning flavors were:

1st Place: Butterscotch

Melanie Bower

2nd Place: Butter Rum

Apiary Superintendent

3rd Place: Black Raspberry

Iowa State Fair

**WELCOME TO THE 98TH ANNUAL
MEETING OF THE:**



**“IOWA HONEY PRODUCERS
ASSOCIATION”**

**November 5th and 6th, 2010
BEST WESTERN REGENCY INN
MARSHALLTOWN, IA 50158**



**PROMOTING BEEKEEPING IN IOWA
SINCE 1912**

Friday, November 5th

Morning schedule:

8:00 - Registration.

- Visit vendors in room A

- Cooking with Honey, Photo Contest and Mead entries due in room F @ 10:00!

- Donated items for Silent Auction to Regina Hoy

- Meetings will take place in Rooms B & C

8:30 - *Call to Order and Welcome!* Pat Randol, Vice President IHPA

- *Introduction of IHPA Board Members and Announcements:*

8:45 - State Apiarist ReportAndy Joseph, State Apiarist

9:05 - Bee Inspection Report.....Delmar Nelson

9:20 -Marla Spivak.....Keeping Bees Healthy

10:20 BREAK - Make a bid on the silent auction items & visit vendors in Room. A.

10:35 - Door Prize, must be present in the room to win

10:45 - Dee Lusby..... Field breeding basics for acclimitizing/retrogression for localizing bees again

12:00 - *LUNCH - On your own or you can eat at Mr. G's here in the hotel.*

Queen Luncheon at Mr. G's. *HAVE LUNCH WITH OUR IHPA QUEEN!*

Afternoon Schedule:

1:00 - Door Prizes, must be present in the room to win.

1:10 - Dee Lusby..... Basic regression for naturalizing bees again to proper sizing for mite control with accompanying secondary diseases

2:10 - BREAK - Make a bid on the silent auction items & visit vendors in Room. A.

Come and taste the Cooking Contest goodies, view photos and mead results in Room F

2:25- Cooking Contest Results

- Photo Contest Results.....

- Mead Judging Results.....

2:30 - Door Prizes, must be present in the room to win

2:40 - Susan Cobey **Mating is Risky Business**

3:40 - Meet the Honey Queen CandidatesRegina Hoy

4:30 - State Fair Exhibitor's please meet in Room F

4:30 - Silent Auction Ends - collect your treasures!

5:00 - Wine & Cheese welcome by the pool - *Time to Visit, Compliments of the Marshalltown*

Convention & Visitors Bureau (We will taste the results of our 2nd annual Mead Judging Contest, or you may just bring your finest homemade mead to share!)

6:30 - Banquet (located in rooms D & E) -Buffet Style Meal includes...Fresh Garden Green Salad Bar, with assorted toppings and dressings, Served with Iced Tea and Regular and Decaffeinated Coffee. Baked Chicken, Sliced Smoked Ham, Served with mashed potatoes and gravy, buttered corn, green beans, a pasta salad and potato salad and dinner rolls and dessert.

Banquet Program:

Introduction of Queen Candidates, Parents and SponsorsRegina Hoy; Honey Queen Chair

Awards PresentationTBA

Speaker Program.....TBA

THANKS! From our Iowa Honey Queen.....Amber Connett

AUCTION – Funds the IHPA Queen Program.....Bill Van Roekel

QUEEN CORONATION.....Regina Hoy

Good Night!!!!!!

Saturday, November 6th

Morning Schedule

8:00 – Registration

Note: Vendors will be packing up around noon today.

8:30 – Announcements & Door Prizes.....Donna Brahms President IHPA

- Introduction of IHPA Board Members

- Bee Inspection Report.....Delmar Nelson

8:50 – Susan Cobey.....Honey Bee Breeding, What Does it Take & Why Is Our Progress Slow?

9:50 – BREAK - Make a bid on the silent auction items & visit vendors in Room. A

10:10 – Door Prizes, must be present in the room to win

10:15 – Dee Lusby.....Building up and keeping strong colonies for main flows and/or over wintering

11:15 – Susan Cobey.....Rearing Quality Queens

12:15 – Lunch - *On your own or you can eat at Mr. G's here in the hotel.*

1:00 – Annual Business Meeting (We will have an agenda for members)

2:00 – Vern Ramsey..... Bee Emergency

3:05 BREAK- Silent Auction Ends – collect your treasures!

3:20–Questions from the audience to Dee Lusby and Sue Cobey

4:30 – Adjournment

Note: There will be a short meeting of new 2010 board members and officers in Room. B

THANK YOU FOR COMING

AND please DRIVE SAFELY!!!!

NOTES:



98th Annual Meeting of the Iowa Honey Producers Association

November 5th and 6th 2010
Marshalltown, Iowa

It's meeting time again! The annual meeting of the Iowa Honey Producers Association will be held Friday, November 5 and Saturday, November 6th in Marshalltown, Iowa at the Best Western Regency Inn (641-752-6321) located at 3303 South Center Street.

Rooms for the event are available at the Best Western Regency Inn for the rate of \$70 for a double room.. The Super 8 which is right adjacent to the Best Western, has the rate of \$55.00. These rooms need to be reserved by October 21st to get the convention special rate and please mention the Iowa Honey Producers when reserving the rooms. The telephone numbers to call are: Best Western (641) 752-6321 or Super 8 is (641) 753-4111.

We have a full schedule planned as usual. We will also be having workshops, photo contest, and food judging and our 3rd annual mead judging contest, and a Queen Auction during Friday night's banquet.

Rules for the Photo Contest at the IHPA Annual Meeting

Photo must be matted but not framed.

Any size photo will be accepted for this competition.

Please put your name on the backside of the photo.

Categories to be submitted will include:

1. Bee on flower
2. General Beekeeping
3. Marketing or Promotion
4. Extracting Honey or Specific Photos pertaining to Honey.

Rules for the cooking with Honey Contest at the IHPA Annual Meeting

Honey is to be the only sweetener

Please submit you recipe with your entry

Judges will keep recipes to be included in the BUZZ

Put your name on the back of the recipe card

Categories to be submitted will include:

1. Desserts
2. Bars or Cookies
3. Drinks
4. Cakes
5. Breads
6. Appetizers or Snacks

Entries could be judged on: (Judges reserve the right to determine how to best judge the entries)

- Presentation of entry
- Best use of honey
- Amount of Honey used (compared to other entries in category)
- Flavor of entry
- Overall appearance of entry

Rules for Mead Judging Contest at the IHPA Annual Meeting:

Supply at least two bottles of Mead

Mead will be judged on the rules of the State Fair.

Mead will be judged on alcohol strength, sweetness, carbonation, temperature, taste, and presentation.

Categories:

1. Traditional Meads
2. Melomels (Fruit Meads)
3. Metheglin (Spiced Meads)

Bring extra bottles of Mead to share at the Wine and Cheese Party by the Pool!

IOWA HONEY PRODUCERS 98th ANNUAL MEETING

MARSHALLTOWN, IOWA — November 5th and 6th, 2010

Name: _____

Address: _____

City: _____ State: _____ Zip: _____ - _____

Phone: (____) _____ County: _____

No. of Colonies: _____ Years Beekeeping: _____ Company Name: _____

E-Mail Address: _____

NOTE: PREREGISTRATION FOR ANNUAL MEETING DEADLINE October 21st. NO EXCEPTIONS:

Individual: Registration after October 23rd will be \$20.00 \$15.00 \$ _____

Family Rate: Registration after October 23rd will be \$35.00 \$28.00 \$ _____

BANQUET - Friday night 6:30 P.M.(per person) Number of tickets ____ X \$35.00 \$ _____

Lunch on Saturday - (per person) Number of tickets ____ X \$20.00 \$ _____

YEAR 2010 MEMBERSHIP DUES:

Iowa Honey Producers Association includes subscription to “The Buzz” \$10.00 \$ _____

2nd Family Membership same address Name: _____ \$ 5.00 \$ _____

3rd Family Membership same address Name: _____ \$ 5.00 \$ _____

(Year 2010 membership required to vote at the Business Meeting)

COOKBOOKS:

	QTY 1-9	10 or more
Iowa Honey Producers Cook Book _____ \$6.50	\$5.50	\$ _____
	TOTAL	\$ _____

Make Check payable to: Iowa Honey Producers Association

Send Form and Check to: Melanie Bower, Treas. IHPA

(Please fill out form completely.) 207 S. Diehl Street, Des Moines, IA 50315

Phone: (515) 287-6542

NOTE: MEMBERS ARE RESPONSIBLE FOR SENDING IN THEIR OWN MAGAZINE SUBSCRIPTIONS AND NATIONAL ASSOCIATION MEMBERSHIPS STARTING OCTOBER 1, 2003

When sending in your magazine subscription or national association membership be sure to inform them of your membership with Iowa Honey Producers Association and give them the name of the Treasurer. There will be printed magazine ordering forms at the meeting. This should speed up your renewals and still give you the association rate on the magazines. There is no discount on membership to the national associations.



Iowa State Fair 2010

I would like to thank the Iowa Honey Producers, the Iowa Honey Queen, Amber Connett, volunteers in the booth, Larry Spina for letting us use his bobble head and collapsible hive, and everyone who had entries in the 2010 Iowa State Fair. Your participation is what makes the Apiary Division such a success. — Melanie Bower, Apiary Superintendent Iowa State Fair

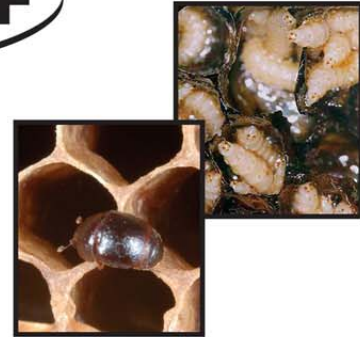


Your ONE and ONLY “in hive” Small Hive Beetle Treatment!



Lowest Price Ever!

- CheckMite+™**
 DC-800 CheckMite+™ 100 pack.....**\$150.00**
 DC-810 CheckMite+™ 10 pack.....**\$ 19.95**



Small Hive Beetle Treatment

- Use a ground drench in addition to CheckMite+™
- Use 1 strip cut in 1/2 then attached to a 5” x 5” corrugated square. Place square strip side down on bottom board.
- Remove strips after 42-45 days

Non-Medicated 5” x 5” Plastic Squares

For use in application with CheckMite+™ in treating Small Hive Beetles.

- DC-815 Black Squares 1 - 499.....\$.35
 500+.....\$.29

GardStar®

It is important to use GardStar® as a ground drench when treating for the small hive beetle!



- DC-825 GardStar® 4 oz. bottle.....\$ 26.95
 DC-830 GardStar® quart bottle.....\$114.95

Mann Lake Ltd.

Hackensack, MN - Woodland, CA

Order anytime at
www.mannlakeltd.com
 or call
800-880-7694

Prices are subject to change without notice and do not include shipping charges.

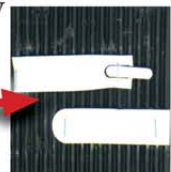
SHB Life Cycle

Eggs → Larvae → Pupae → Adult

Avoiding SHB Infestations

- Keep strong healthy hives by treating for disease and mites when appropriate.
- Feed syrup and pollen substitute to keep your hives strong when natural sources are not available.
- Use CheckMite+™ and GardStar® at the first sign of infestation.

TIP: To attract the beetles, spread a small amount of Bee-Pro® patty down the center of the square then attach the strip on either side of the patty



Varroa Treatment



- Treatment is most effective when brood rearing is lowest
- Treat all infested colonies within the yard
- Use 1 strip for every 5 frames of bees
- Remove strips after 42-45 days

For All Your Packaging Containers
For Packing Honey

(No Order Too Large or Small)

BL Plastic Containers



"We Built Our Business on
Service, Quality, and
Dependability."

Elmer C. Lynn
405 Kimberly Lane
Des Moines, IA 50327

Phone : 515-266-6112
Fax : 515-266-1112

LAPPS BEE SUPPLY CENTER

500 SOUTH MAIN STREET
REESEVILLE, WISCONSIN 53579

Beekeeping & Candlemaking
Supplies

FREE CATALOG
1-800-321-1960

"Serving the beekeeper
for 25 years"



Do you need to reach
Iowa Beekeepers?

Create a buzz of your own!

Place an ad in *The Buzz Newsletter* today.

2" x 1/2 page	\$6.00 per month
1/4 page	\$15.00 per month
1/2 page	\$30.00 per month
Full page	\$60.00 per month

Please contact The Buzz Newsletter at
thebuzz@abuzzaboutbees.com



32 YEARS SERVING USA BEEKEEPERS
MAKE US YOUR SOURCE

BEEKEEPING EQUIPMENT
CANDLEMAKING EQUIPMENT
SOAPMAKING EQUIPMENT
PACKAGE BEES
QUEENS
UNIQUE CONTAINERS
EXPERT INFORMATION

HIGH FRUCTOSE CORN SYRUP

FREE CATALOG ON REQUEST

B & B Honey Farm

5917 Hop Hollow Road
Houston, Minn. 55943



Information 1-507-896-3955
Order Line 1-800-342-4811
Fax 1-507-896-4134
Email bbhoney@acegroup.cc

Honey Containers Make the Sale!

Queenline Glass Honey Jars

Size of Jar Honey Capacity	Number of Jars Per Carton	Lid* Style (see below)	Order Number	Ship Weight Per Carton lbs.	Price Per Carton 1-99 Cartons
8 ounces	24	(48 mm)	M001952	10	\$14.00
1 pound	12	(58 mm)	M001962	8	\$8.49
1 pound	24	(58 mm)	M001972	14	\$16.30
2 pound	12	(63 mm)	M001982	12	\$12.18
4 pound	6	(G70)	M001992	10	\$11.49

Lid Style White plastic (glass not shipped by UPS)

*We reserve the right to substitute lids should the style you requested not be available.



* 8 oz. and
2 lb. bears
are also available.

**Check out our catalog for
other types and sizes of
quality honey
containers!**



M00255



M00255CPN

Honey Bears

M00255 12 oz. Regular Bears
with Cap and Collar (38mm) Cartons of 12
Case of 12 Ship Wt. 3 lbs. \$6.95

M00255CPN 12 oz. Clear Bears
with Cap and Collar (38mm) Cartons of 12
Case of 12 Ship Wt. 3 lbs. \$7.95

M00256 Bulk Pack - 250 per case
1-4 Cases 250 per case . . \$86.95 per case
5 & Up Cases \$84.45 per case
Ship wt. 30 lbs. per case

M00256CPN 12 oz. Clear Panel Bears
with Cap and Collar (38mm)

1-4 Cases \$105.95 per case
5 & Up Cases \$99.95 per case
Ship wt. 30 lbs. per case

3 lb. and 5 lb. Plastic Honey Jugs

Great Containers for Packing Yard Rent Honey

With 38mm Yellow Ratchet
Style Lids

3 lb. Jugs

150 Jugs per Case

M00280 Ship Wt. 70 lbs. per Case

1-5 Cases \$79.30 per Case

6 & Up Cases . . . \$76.20 per Case

5 lb. Jugs

120 Jugs per Case

M00281 Ship Wt. 70 lbs. per Case

1-5 Cases \$79.30 per Case

6 & Up Cases . . . \$76.20 per Case



Glass 3 lb. Round Jars

Carton of 12 with white plastic lids

M001932

1-99 \$13.50 per Carton

(All Ship Wts. 12 lbs. per carton.)



1 lb.
M01158

Closeup of Pattern



Inverted Plastic Jar With Hexagon Pattern

Inverted Plastic Honey Jar
With Hexagon Pattern
with 38mm Snap Caps

Jar Size	No. of Jars Per Ctn.	Item Number	Ship Wt. Per Ctn. lbs.	Price Per Ctn. 1-99 Cartons
1 pound	24	M01158	3	\$16.99

1 lb. and 2 1/2 lb. Attractive Plastic Containers

With Honey
Bee Emblem



Carton of 24 -1 lb.

Container with plastic lids (43 mm)

M002042

1-99 \$10.94 per Carton

Carton of 6 -2 1/2 lb.

Containers with plastic lids (58 mm)

M002052

1-99 \$5.32 per Carton

(Ship Wts. 3 lbs. per carton.)



Dadant Iowa Branch

1318 11th St.
Sioux City, IA 51102

Phone 712-255-3232

Fax 712-255-3233

Toll-free orders 1-877-732-3268

Illinois Office

51 S.2nd St.

Hamilton, IL 62341

1-888-922-1293

Order on-line at:

<http://www.dadant.com>

Call for Pricing on 100+ Cartons

All prices are FOB, Hamilton, Illinois

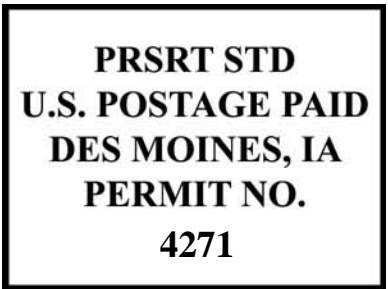
Note: Plastic containers may ship at individual weights listed not combined weights.
All prices are subject to change.

The Buzz Newsletter

Iowa Honey Producers Association
207 S.E. Diehl
Des Moines, IA 50315

RETURN SERVICE REQUESTED

ISSUE 10 – October 2010



Officers

President : Donna Brahm
14922 535th Street
Griswold, IA 51535
(712) 778-4255 home
(712) 778-4256 orchard line
mbrahms@netins.net

Vice President: Pat Randol
2505 Carriage Trail
Winterset, IA 50273
(515) 210-7445
Pat.Randol@RandolHoney.com

Secretary: Mary Ebert
705 Hwy. #1 West
Iowa City, IA 52246
(319) 354-6696
Mebert@netins.net

Treasurer: Melanie Bower
207 S.E. Diehl
Des Moines, IA 50315
(515) 287-6542
melrb@msn.com

Historian: Peggy Ennis
1040 Union Ave.
Goodell, IA 50439
(641) 444-4767

Past President: Curt Bronnenberg
1433 Hull Ave.
Perry, IA 50220
(515) 465-5939
CBronny823@aol.com

District Directors

District #1 Kristoffer Valleroy, Sr.
1638 W 35th St.
Davenport, IA 52806
(563) 320-1488
kvalleroyr@yahoo.com

District #2 Louise Johnson
34147 310th St.
Guttenberg, IA 52052
(563) 252-2340
LouiseJ@alpinecom.net

District #3 Matt Stewart
2956 170th St.
South Amana, IA 52234
(319) 662-4145

District #4 John Johnson
3422 Clinton Court
Ames, IA 50010-4371
(515) 450-5606
wjohnq@aol.com

District #5 Jack Trowbridge
20041 235th Street
Decatur, IA 50067
(641) 446-3123

District #6 Larry Boernsen
6724 200th Street
Ocheyedan, IA 51354
(712) 735-4205
lm5kbees@iowatelecom.net

State Apiarist

Andrew Joseph (515) 725-1481
andrew.joseph@iowaagriculture.gov

Back-to-Basics Beekeeping Club

Contact: Eves Cadwallader
2420 285th St.
Oskaloosa, IA 52577
(641) 673-3993
weic@kdsi.net

Central Iowa Beekeepers Association

Contact Arvin Foell
30930 530th Ave.
Kelley, IA 50134
Home phone 515/597-3060
Cell phone 515/450-9494
ajfoell@huxcomm.net

Des Moines Backyard Beekeepers

Contact: Julia McGuire
jcammcguire@yahoo.com

IDALS website
www.agriculture.state.ia.us

National Honey Board
www.honey.com



Iowa Beekeeper Clubs

East Central Iowa Beekeepers

Contact: Dave Irvin
2254 S. Riverside Dr.
Iowa City, IA 52246
(319) 351-6205

North Iowa Bee Club

Contact: Pat Ennis
1040 Union Ave.
Goodell, IA 50439
(641) 444-4767
Flat_Lander@lycos.com

Northeast Iowa Beekeepers

Contact: Louise Johnson
34147 310th St.
Guttenberg, IA 52052
(563) 252-2340
LouiseJ@alpinecom.net

Additional Links and Emails

American Beekeeping Federation website
www.ABFnet.org

Queen Co-Chairs

Regina Jager (641) 660-0772
Louise Johnson (563) 252-2340

Northwest Iowa Beekeepers

Contact: Larry J. Boernsen
6724 200th St.
Ocheyedan, Iowa 51354
(712) 735-4205
Lm5kbees@iowatelecom.net

Southeast Iowa Beekeepers

Contact: Vernie Ramsey
22781 Route J16
Birmingham, IA 52535
(319) 498-4355
Vdramsey@netins.net

Southwest Iowa Honey Producers

Contact: Mike & Donna Brahm
14922 535th Street
Griswold, IA 51535
(712) 778-4255

Friendly Beekeepers of Iowa

Contact: Judy Spence
12839 Carpenter Trail
Carlisle, IA 50047
(515) 988-8397
jespencejr44@gmail.com

Robert Haxton
Food Processing Plants
Iowa Dept. of Inspections and Appeals
rhaxton@dia.state.ia.us