



The Buzz

Newsletter of the Iowa Honey Producers Association



September 2010

Beekeeper's Journal & Record Pg 5
98th IHPA Annual Meeting Nov. 5 & 6 Pgs. 7-11
Beekeeper of the Month is Matt Upah Pg. 12





Dates To Bee Remembered

November 4, 2010 Board Meeting 7 pm Best Western Regency Inn, Marshalltown, IA

November 5th & 6th Annual Meeting Best Western Regency Inn, Marshalltown



For Sale: Pine Hive Components. 9 5/8" Boxes \$16, 6 5/8" Boxes \$14, reversible screened bottom boards \$14 (solid bottom boards \$13), telescoping cover \$16. Painted, handholds, and bee space compatible with commercial woodenware. Glued with Titebond II and screwed, simple butt joints.

Contact: Josh Sommers
(641) 658-2213

For Sale: new crop honey \$1.75 lb. in five gal. bucket plus new bucket exchange. Don't let your customers run out of honey, or they will get it from someone else.

Curt Bronnenberg (515) 465-5939
www.springvalleyhoneyfarms.com

For Sale: Better Way Wax Melter that was made in Altoona IA. It is 27" wide, 46" long 24" high and has a 9" stand. \$200.00

Curtis Barnhart
Phone 319 480-4209 Monticello IA

FOR SALE: Good Used Bee Equipment

- #8 Hive Bodies with 10 frames
 - #5 Illinois Supers with 10 frames
 - #6 Galvanized Top Covers
 - #6 Inner Covers (wood)
 - #2 Shallow comb supers
 - #5 Bee Excluders (maze)
 - #5 Queen Excluders (screen)
 - #1 Kelly Stainless Steel 2 frame extractor with motor & stand (like new)
 - #1 Colony of bees in 2 story hive with 2 Illinois Supers
- Miscellaneous supplies and equipment for beginner
\$600 for everything

Robert Nolan 563-355-2163
Davenport

For Sale: Honeybees in one-story hives with ten frames of good comb, reversible screened bottom board and a cover. \$125.

Contact Josh Sommers
641-658-2213

For Sale: Stainless steel Kelley Grocer's tank (15 gal.) with out honey gate. \$80.

Contact: Galen Eiben
(319) 885-6264

FOR SALE: Manual loading Cowen uncapper with conveyor chain. Only used on 40 barrels of honey--\$7500. New price was \$10,000. Also for sale are 2 gallon feeder pails at 50 cents each.

Contact Dick Blake at 712-246-3412



Buzz Newsletter

In order to have an Iowa Honey Producers newsletter, the members of this organization need to help with the articles. I am in need of beekeepers who would like to be a featured beekeeper of the month or know of someone who would like to be featured. Please contact: Ron Wehr, 2270 Juniper Ave., Keota, Iowa 52248 or call 319-698-7542. Thank you.

Submitted by Ron Wehr

The Buzz Newsletter Article Submissions and IHPA Memberships

Please send submissions, classified ads, and photos to Alex W. Ebert by email to TheBuzz@ABuzzAboutBees.com or by mail to The Buzz, c/o Phil Ebert, 14808 S. 102nd Ave. E., Lynnville, IA 50153. **The deadline for submissions is the 15th of each month to be included in the following month's newsletter.** The Buzz is a monthly newsletter published by the Iowa Honey Producers Association which is an affiliate of the Iowa State Horticultural Society. IHPA Membership is only \$10 annually. To join IHPA and receive your complimentary member subscription to The Buzz Newsletter, please contact Melanie Bower, IHPA Treasurer, 207 S.E. Diehl, Des Moines, IA 50315, Phone: (515) 287-6542

Greetings from the President of the IHPA

Dear Honey Producers,

Another Iowa State Fair is finished. Thank you to so many volunteers for helping make it a success. Facts and figures will be given after all bills and commitments are calculated. It is so amazing that the fairgrounds change so much during the fair. Fairgoers are very interested in our products and are always asking questions. The theme in the Agriculture building was –Ask a Farmer, we changed it to –Ask a Beekeeper! We get many questions so we decided to capitalize on it for our theme also. Thanks again to all those who worked in the IHPA sales booth, provided products, entered exhibits, or to those who visited the fair and those who helped me out.

Amber was her usual bubbly self and helped immensely in the booth by answering questions, helping to judge the food made with honey entries and presenting talks to the public.

September is National Honey Month, so let's celebrate honey and beekeeping. Plan to have some extra events to bring awareness to the public. It really helps a business when there is a promotion going on. Contact newspapers and radios for news releases. If you need information, check out the National Honey Board website, nhb.org. Put information on websites, etc. It is really easy to get people excited about honey.

September usually brings on the extracting parties! Please check out the article concerning September tips. Remember to check for mite levels, treat if needed, check the honey stores for the bees and make sure that the honey bees are well prepared for winter. I sure hope your honey bees made lots of honey this summer and you have a great supply of wonderful Iowa Honey for your customers and of course, for yourself.

Make plans to attend the Annual Meeting of the Iowa Honey Producers Asso-

ciation. The event will be held in Marshalltown at the Best Western Regency Inn on November 5th and 6th. Lots of great speakers, fun, fellowship and networking is always present at the meeting. Please consider running for an office or become a board member. Serving this organization with your energy is a great way to improve beekeeping in the state of Iowa. There will be contests and we will get to meet the new group of youth scholarship recipients. Contact Pat Randol with questions.

Speaking of the youth program, the deadline is September 15. If you know of a youth desiring to become a beekeeper, contact Mike at (712) 778-4255 or mbrahms@netins.net or get the information from the IHPA website, ABuzzAboutBees.com. The youth need to fill out a completed application and get it mailed to Mike by September 15. We have really been fortunate to have such great kids participate.

September is extremely busy around our home. Apples are getting ready, people have been asking for them since May. We will be giving tours to school children and others. We are having events almost each week-end in September and October to attract additional customers. Hope your harvest is wonderful and you will "bee" pleased with Iowa products for your customers.

Bee safe and have an enjoyable September. I enjoy this time of year even though it is so hectic. Hope you do also.

Sincerely,
Donna Brahms, IHPA President

Possible Breakthrough in Breeding Parasite-Resistant Bee

A British beekeeper says he may have discovered a strain of honey bee immune to a parasite that has been gradually wiping out populations of the vital

insect worldwide. Scientists have been trying to find a way to fight the pesticide-resistant Varroa mite.

But now a retired heating engineer who spent 18 years searching for a mite-resistant breed may have found a breakthrough. Ron Hoskins, 79, from Swindon in southern England, says he has managed to isolate and breed a strain of bees which "groom" one another, removing the mites.

[Ron Hoskins, Bee Researcher]:
"We noticed that some of them were very healthy and surviving, not debilitated at all and it triggered: 'Why, what's happening, what's going on?'"

After examining enlarged images of dead mites recovered from the hives containing healthy bees he found some had been damaged.

[Ron Hoskins, Bee Researcher]:
"That damage is obvious, it's done by another bee tearing this off a sister bee."

His work received backing from Francis Ratniek, professor of apiculture at Sussex University, south of London.

[Francis Ratniek, Professor of Apiculture]:
"I certainly agree with the general idea of trying to breed disease-resistant honey bees and in fact we're doing that at the University of Sussex. What we're breeding for in Sussex is what we call 'hygiene' – not so much grooming, but the removal of dead or dying individuals so that the Varroa mites can't breed easily and other diseases can't spread on larvae and pupae."

Hoskins says recent research has found more than two thirds of Britain's honeybees have been lost to the parasite. He is now looking for funding to further his research and has an invitation from Australian officials and counterparts eager to keep the parasite at bay.

September Tips for the Beekeeping Year

- As you harvest, make sure your bees will have sufficient honey reserves for winter. (40-60 pounds) If after the nectar flow, you don't have enough reserves, be sure to feed them either corn syrup (the jury is still out on this, GMO grains causing problems? DO NOT use corn syrup or other syrups that you purchase at a grocery store) use high fructose corn syrup or sugar water. In the fall, the sugar solution should be a ratio of 2:1 (2 parts sugar to 1 part water). **THE BEST FEED FOR YOUR BEES IS HONEY, SO IF YOU HAVE HONEY AVAILABLE-FEED IT TO YOUR BEES.**
- Make sure all your colonies are queenright and strong enough to make it through the winter. Combine any weak colonies or your hive will become infested with wax moths.
- Get your entrance reducers on towards the end of September to keep mice out of your hives. Check for mice BEFORE installing mouse guards. Check your bottom boards for holes big enough for a mouse to go through.
- Store any frames with drawn comb in paradichlorobenze (moth crystals). Wax moth damage can be devastating to your combs. Store them in a cool ventilated area. Do not store your supers in plastic garbage bags as this acts as an incubator for the wax moth.
- Update your record book---you won't remember in the spring!

Here are some reasons bees die over the winter, make sure you take care of these problems in the fall:

1. Bees run out of honey
2. Too few bees to maintain the cluster
3. The bees' digestive tracts compact with too much waste matter

4. They exhibit parasitic mite syndrome.

- Treat your colonies for Nosema disease. Each colony should be fed Fumagilin B in heavy syrup.
- Treat for American and European Foulbrood
- Check your colonies to see if you need to treat for Varroa mites.
- Combine a weak colony with a stronger colony. Colonies may be split again in the spring.
- Keep a vigilant eye out for small hive beetle. Inspect your hives to make sure you have a good laying queen. You should see brood in all stages (eggs, larvae, capped).
- If treating for mites, get your treatments on as soon as possible. Mark your calendar with the date they went in and the date they should come out. The earlier you can get your treatments on for Varroa mites the better chance you have of getting healthy young bees into the hive to make it through the winter.
- Make sure your brood is in the center of the bottom hive body. Arrange honey frames on the sides and in the top hive body--it should be full of honey. If it isn't, feed your bees syrup.
- Make sure your hives are tipped forward, just slightly so water doesn't pool on the bottom board and cause moisture problems.
- Take an inventory of any equipment that needs to be replaced and replace it!

THE BEEYARD REPORT

Oops, I'm way past deadline. Doing the Beeyard Report has been the last thing on my mind. Fall is a tough time for us.

There is almost too much to do. The honey has to be pulled and extracted. We can't let it sit around or the hive beetles get started in it. We have to extract as we go. Mite load has to be monitored and dealt with. Colonies have to be fed up to weight. Insulation boards have to be placed under the lids, entrance reducers have to be put in and wraps installed. I really don't think that wraps do anything to keep the bees alive but they cover the holes and help retain heat in the spring. That helps the cluster loosen up and have a larger brood area.

Alex and Adam put a mite treatment in when they pull the yards. I try to follow behind a week later to check the mite load. So far, the most I have gotten on an ether roll is two. The mite load can increase exponentially at the end of the summer. Even when we start out with a relatively small load, there are always some yards we don't get to in time. We still have 15 yards left to pull at this writing. It's always tempting to try to catch that last box of honey but our experience has shown that it is best for us to get the supers off and get the mite treatment in. It only takes two or three weeks for the bees to crash if we wait too long. Going to Mt Pleasant really throws a kink into things.

That kills a week but it is too much fun to miss. All work and no play makes Jack a dull boy.

Our crop is decent. I'm guessing somewhere in the 80# area. We were hoping for 100 barrels when the bees were flying strong at the end of July. The rain put an end to that. Even with a decent crop, we will still have to buy honey. I finally have all the comb honey cut up. That is a time consuming little job. The market for chunk honey has improved over the last few years. I used to have hard time giving that away.

However, every opportunity seems to create a problem. After I cut up the chunks, I put them in jars and store them without liquid honey in the jars. Now, I need a freezer to store the chunks in so the honey that drains off them doesn't granulate.

Crowds at the State Fair were way, way down. If I read the signs correctly, they are still going forecast close to a million attendees. I can't see it. The 2nd Friday of the Fair is normally a big day. The yards around the Fairgrounds that park cars had almost no cars in them. There were other days that had really short attendance. It speaks well for the IHPA stand that we still had good sales. Donna did a nice job. I'm sure she will have a more detailed report on Fair activities.

The bees were starting to fly again around the 22nd of August. There is goldenrod coming on and quite a few sunflowers in some areas. When we lived in the Fairfield area, the bees always worked goldenrod hard. Here, it's not so much. We have a couple of yards on prairie restoration areas where there is lots of goldenrod. Last year the bees worked it. That was the first time in a long time. You can smell it in the hive when the bees work it. The caps take on a yucky yellow color, also.

Crop reports are still spotty. Here's hoping you were in a good area.

Submitted by Phil Ebert

Beekeeper's Record & Journal

The following was reprinted with the permission of the estate of Richard Taylor. The material is from the book, "*Beekeeper's Record & Journal*", text by Richard Taylor, and designed and illustrated by Cynthia Diamond. This book (among other items) was graciously donated to the youth scholarships' during the 2009 IHPA annual meeting in October at the Best Western Regency Inn in Marshalltown. After the meeting, this book was not taken and is now the property of the Iowa Honey Producers Association, Historian. I have enjoyed reading it, and thought the membership would also. As

stated by Kim Flottum, Editor of the *Bee Culture*; "We have a Gem".

Peggy Ennis, IHPA Historian

September

The warm September days, growing perceptibly shorter, nourish the feeling that life has come to a standstill. Things will still ripen, but little will actually grow, as the sun settles more and more towards the horizon and, on cloudless days, makes the world seem brighter than summer. And the apiary takes on an entirely new ambience. At first you pick up the faint but unmistakable scent of goldenrod, which soon accumulates to an almost overpowering yeasty odor, noticeable from two or three hundred feet. Sometimes you learn of the whereabouts of hitherto unknown apiaries and bee trees by detecting this unmistakable sign. In New England it is not a pleasant odor, for the goldenrods that grow there are different from others. In fact the odor can be so rank as to lead a novice beekeeper to suspect some calamity, suggestive as it is of death and disease. But that is no bad sign. The odor of evaporating nectar is no reliable guide to the taste of honey. Where onions are grown in abundance and allowed to bloom, as at seed farms, bee hives can acquire the overpowering odor of onion, and yet that honey that comes from this nectar has not a trace of that flavor. And it is the same for goldenrod. Even when the odor of the evaporating nectar is a veritable stench, as in Connecticut sometimes, the resulting honey is a delight for the gourmet who has learned to appreciate it. Appropriately deep gold in color, as if to proclaim its source, it combines its rich flavor to perfection with any hot cereal. Further to the west and into the Midwest, where the soil is more alkaline, different goldenrods flourish, and the apiaries on a warm evening are both pungent and sweet.

The fall honey flows probably provide the best protection for the bees against winter. A colony can hardly perish if

surrounded by honey, unless by suffocation, which is easily averted. In fact in most places a beekeeper is wise to complete his honey harvesting before September, leaving for the bees everything gathered after that. It is quite true that a good fall flow will sometimes give a strong colony an additional shallow super of goldenrod honey, but if all the supers have been removed and extracted, and then not replaced, then that fall honey will be stored by the bees down in their hives. It will be worth more to you there than in honey jars. Not only will your bees come more safely through the winter, they will come through much stronger in numbers, giving you powerful colonies to gather your crop the next year.

Richard Taylor

Richard Taylor was born 1919 and passed away October 30, 2003 in New York. He earned his PhD at Brown University and taught principally at Brown University, Columbia, and University of Rochester. He was an American Philosopher, renowned for his dry wit and his contributions to Metaphysics. Although it is well known he was a philosopher – he was far better known as a beekeeper. It is often said – "I have never met a beekeeper who has not heard of Richard Taylor". He owned 300 hives and from 1970 produced mostly comb honey. His significant contributions to beekeeping are - authoring many books on beekeeping - among these are the two; "*The Comb Honey Book*" and "*The Joys of Beekeeping*", and regularly writing articles for bee journals. His near legendary honey stand at the roadside in front of his country home operated on the honor system, secured only by gentle solicitations to honesty posted on its walls.

To "bee" continued next month

Iowa Honey Queen September and October

Rain, more rain, and surprise, surprise rain. That was the story of the end of my summer and the reason I wasn't able to get an article in to the buzz in August for the September issue and I lumped two months into one article. My dad experienced some flooding and needed help, add all my fair and back to school preparations to that and you have yourself a concoction that would make any honey queen pull her hair out! But fortunately I survived and get to continue on with my reign.

At state fair I got to meet a lot of new people and take lots of photographs, I even got to sign autographs and one little girl wanted me to take her to my castle! I have to say the best part of honey queen is sometimes the little kids and the things they say. It wouldn't be right if fair went perfectly smooth for me and I ran into no problems, so naturally with my luck I caught the 24 hour stomach flu right at the end and spent one day sleeping and the next few trying to smile and keep from passing out. But in all I would call the Iowa State Fair a complete success!

For the month of September I will be attending Old Threshers in Mount Pleasant with Phil Ebert, and by the time you read this that event should be over, but none the less I'm sure it will be fun and I will get to talk to a lot of people about honeybees. The only other event I currently have scheduled is on October 2nd and 3rd at Living History Farms rolling candles with kids.

Now that I'm back to school I am keeping plenty busy, I currently have a credit load of 21 credits and am in the process of finding a job. I don't want that to deter you from scheduling me though! Often times all I need is a little advanced warning so I can get my professors to let me out of class, so don't assume I can't make it, just contact

me with any event you might have and I will sweet talk them into excusing me!!

I want to keep this short and sweet, but I have one other pitch I need to get in real quick. I encourage any young lady that meets the requirements for honey queen to give it a try! Besides the skills you build on and the people you meet, you also get to travel the state and see things you never thought were in Iowa and get to learn so much about beekeeping! If you have any questions about being queen or the process feel free to contact me or the queen chairs.

I hope everyone is ready for fall! Remember to stay safe during harvest!

Amber Connett
aconnett@iastate.edu
515-460-9199

WEAVER'S famous QUEENS and Package Bees

★ Buckfast ★ All-American

Order On-Line Now

Visit us on the Web at www.rweaver.com

THE R WEAVER APIARIES, INC.

16495 CR 319, Navasota, TX 77868

Ph: 936/825-2333 rweaver@rweaver.com

Making Bees Less Busy: Social Environment Changes Internal Clocks

Study suggests honey bees' circadian rhythms depend on contact with young

Honey bees removed from their usual roles in the hive quickly and drastically changed their biological rhythms, according to a study in the Sept. 15 issue of *The Journal of Neuroscience*. The changes were evident in both the bees' behavior and in their internal clocks. These findings indicate that social environment has a significant effect on the physiology and behavior of animals. In

people, disturbances to the biological clock are known to cause problems for shift workers and new parents and for contributing to mood disorders.

Circadian rhythm, the body's "internal clock," regulates daily functions. A few "clock genes" control many actions, including the time of sleeping, eating and drinking, temperature regulation, and hormone fluctuations. However, exactly how that clock is affected by—and affects—social interactions with other animals is unknown.

Senior author Guy Bloch, PhD, and his colleagues from The Hebrew University of Jerusalem, Israel, chose to study bees in part because of their complex social environment. One role in bee society is the "nurse": bees that are busy at all times caring for larvae. This continuous activity is different from other bees and animals, whose levels rise and fall throughout the day.

Bloch and his team thought that changing the nurse bees' social environment might alter their activity levels, so they separated them from their larvae. The researchers found that the bees' cellular rhythms and behavior completely changed, matching a more typical circadian cycle.

"Our findings show that circadian rhythms of honey bees are altered by signals from the brood that are transferred by close or direct contact," Bloch said. "This flexibility in the bees' clock is striking, given that humans and most other animals studied cannot sustain long periods of around-the-clock activity without deterioration in performance and an increase in disease."

(continued on page 12)

**WELCOME TO THE 98TH ANNUAL
MEETING OF THE:**



**“IOWA HONEY PRODUCERS
ASSOCIATION”**

**November 5th and 6th, 2010
BEST WESTERN REGENGY INN
MARSHALLTOWN, IA 50158**



**PROMOTING BEEKEEPING IN IOWA
SINCE 1912**

Friday, November 5th

Morning schedule:

8:00 - Registration.

- Visit vendors in room *A*

- Cooking with Honey, Photo Contest and Mead entries due in room *F* @ 10:00!

- Donated items for Silent Auction to Regina Hoy

- Meetings will take place in Rooms *B* & *C*

8:30 - *Call to Order and Welcome!* Pat Randol, Vice President IHPA

- *Introduction of IHPA Board Members and Announcements:*

8:45 - State Apiarist ReportAndy Joseph, State Apiarist

9:05 - Bee Inspection Report.....Delmar Nelson

9:20 - Marla Spivak.....Keeping Bees Healthy

10:20 BREAK - Make a bid on the silent auction items & visit vendors in Room. *A*.

10:35 - Door Prize, must be present in the room to win

10:45 - Dee Lusby..... Field breeding basics for acclimitizing/retrogression for localizing bees again

12:00 - LUNCH - *On your own or you can eat at Mr. G's here in the hotel.*

Queen Luncheon at Mr. G's. *HAVE LUNCH WITH OUR IHPA QUEEN!*

Afternoon Schedule:

1:00 - Door Prizes, must be present in the room to win.

1:10 - Dee Lusby..... Basic regression for naturalizing bees again to proper sizing for mite control with accompanying secondary diseases

2:10 - BREAK - Make a bid on the silent auction items & visit vendors in Room. *A*.

Come and taste the Cooking Contest goodies, view photos and mead results in Room *F*

2:25 - Cooking Contest Results

- Photo Contest Results.....

- Mead Judging Results.....

2:30 - Door Prizes, must be present in the room to win

2:40 - Susan Cobey **Mating is Risky Business**

3:40 - Meet the Honey Queen CandidatesRegina Hoy

4:30 - State Fair Exhibitor's please meet in Room *F*

4:30 - Silent Auction Ends - collect your treasures!

5:00 - Wine & Cheese welcome by the pool - *Time to Visit, Compliments of the Marshalltown*

Convention & Visitors Bureau (We will taste the results of our 2nd annual Mead Judging Contest, or you may just bring your finest homemade mead to share!)

6:30 - Banquet (located in rooms *D* & *E*) - Buffet Style Meal includes... Fresh Garden Green Salad Bar, with assorted toppings and dressings, Served with Iced Tea and Regular and Decaffeinated Coffee. Baked Chicken, Sliced Smoked Ham, Served with mashed potatoes and gravy, buttered corn, green beans, a pasta salad and potato salad and dinner rolls and dessert.

Banquet Program:

Introduction of Queen Candidates, Parents and SponsorsRegina Hoy; Honey Queen Chair

Awards PresentationTBA

Speaker Program.....TBA

THANKS! From our Iowa Honey Queen.....Amber Connett

AUCTION – Funds the IHPA Queen Program.....Bill Van Roekel

QUEEN CORONATION.....Regina Hoy

Good Night!!!!!!

Saturday, November 6th

Morning Schedule

8:00 – Registration

Note: Vendors will be packing up around noon today.

8:30 – Announcements & Door Prizes.....Donna Brahms President IHPA

- *Introduction of IHPA Board Members*

- Bee Inspection Report.....Delmar Nelson

8:50 – Susan Cobey.....Honey Bee Breeding, What Does it Take & Why Is Our Progress Slow?

9:50 – BREAK - Make a bid on the silent auction items & visit vendors in Room. A

10:10 – Door Prizes, must be present in the room to win

10:15 – Dee Lusby.....Building up and keeping strong colonies for main flows and/or over wintering

11:15 – Susan Cobey.....Rearing Quality Queens

12:15 – Lunch - *On your own or you can eat at Mr. G's here in the hotel.*

1:00 – Annual Business Meeting (We will have an agenda for members)

2:00 – Vern Ramsey..... Bee Emergency

3:05 BREAK- Silent Auction Ends – collect your treasures!

3:20–Questions from the audience to Dee Lusby and Sue Cobey

4:30 – Adjournment

Note: There will be a short meeting of new 2010 board members and officers in Room. B

THANK YOU FOR COMING

AND please DRIVE SAFELY!!!!

NOTES:



98th Annual Meeting of the Iowa Honey Producers Association

November 5th and 6th 2010
Marshalltown, Iowa

It's meeting time again! The annual meeting of the Iowa Honey Producers Association will be held Friday, November 5 and Saturday, November 6th in Marshalltown, Iowa at the Best Western Regency Inn (641-752-6321) located at 3303 South Center Street.

Rooms for the event are available at the Best Western Regency Inn for the rate of \$70 for a double room.. The Super 8 which is right adjacent to the Best Western, has the rate of \$55.00. These rooms need to be reserved by October 21st to get the convention special rate and please mention the Iowa Honey Producers when reserving the rooms. The telephone numbers to call are: Best Western (641) 752-6321 or Super 8 is (641) 753-4111.

We have a full schedule planned as usual. We will also be having workshops, photo contest, and food judging and our 3rd annual mead judging contest, and a Queen Auction during Friday night's banquet.

Rules for the Photo Contest at the IHPA Annual Meeting

Photo must be matted but not framed.

Any size photo will be accepted for this competition.

Please put your name on the backside of the photo.

Categories to be submitted will include:

1. Bee on flower
2. General Beekeeping
3. Marketing or Promotion
4. Extracting Honey or Specific Photos pertaining to Honey.

Rules for the cooking with Honey Contest at the IHPA Annual Meeting

Honey is to be the only sweetener

Please submit you recipe with your entry

Judges will keep recipes to be included in the BUZZ

Put your name on the back of the recipe card

Categories to be submitted will include:

1. Desserts
2. Bars or Cookies
3. Drinks
4. Cakes
5. Breads
6. Appetizers or Snacks

Entries could be judged on: (Judges reserve the right to determine how to best judge the entries)

- Presentation of entry
- Best use of honey
- Amount of Honey used (compared to other entries in category)
- Flavor of entry
- Overall appearance of entry

Rules for Mead Judging Contest at the IHPA Annual Meeting:

Supply at least two bottles of Mead

Mead will be judged on the rules of the State Fair.

Mead will be judged on alcohol strength, sweetness, carbonation, temperature, taste, and presentation.

Categories:

1. Traditional Meads
2. Melomels (Fruit Meads)
3. Metheglin (Spiced Meads)

Bring extra bottles of Mead to share at the Wine and Cheese Party by the Pool!

IOWA HONEY PRODUCERS 98th ANNUAL MEETING

MARSHALLTOWN, IOWA — November 5th and 6th, 2010

Name: _____
 Address: _____
 City: _____ State: _____ Zip: _____ - _____
 Phone: (____) _____ County: _____
 No. of Colonies: _____ Years Beekeeping: _____ Company Name: _____
 E-Mail Address: _____

NOTE: PREREGISTRATION FOR ANNUAL MEETING DEADLINE October 21st. NO EXCEPTIONS:

Individual: Registration after October 23rd will be \$20.00 \$15.00 \$ _____
 Family Rate: Registration after October 23rd will be \$35.00 \$28.00 \$ _____
 BANQUET - Friday night 6:30 P.M.(per person) Number of tickets ____ X \$35.00 \$ _____
 Lunch on Saturday - (per person) Number of tickets ____ X \$20.00 \$ _____

YEAR 2010 MEMBERSHIP DUES:

Iowa Honey Producers Association includes subscription to "The Buzz" \$10.00 \$ _____
 2nd Family Membership same address Name: _____ \$ 5.00 \$ _____
 3rd Family Membership same address Name: _____ \$ 5.00 \$ _____

(Year 2010 membership required to vote at the Business Meeting)

COOKBOOKS:

	QTY 1-9	10 or more
Iowa Honey Producers Cook Book _____ \$6.50	\$5.50	\$ _____
	TOTAL	\$ _____

Make Check payable to: Iowa Honey Producers Association
Send Form and Check to: Melanie Bower, Treas. IHPA
(Please fill out form completely.) 207 S. Diehl Street, Des Moines, IA 50315
Phone: (515) 287-6542

NOTE: MEMBERS ARE RESPONSIBLE FOR SENDING IN THEIR OWN MAGAZINE SUBSCRIPTIONS AND NATIONAL ASSOCIATION MEMBERSHIPS STARTING OCTOBER 1, 2003

When sending in your magazine subscription or national association membership be sure to inform them of your membership with Iowa Honey Producers Association and give them the name of the Treasurer. There will be printed magazine ordering forms at the meeting. This should speed up your renewals and still give you the association rate on the magazines. There is no discount on membership to the national associations.

Featured Beekeeper of the Month

This month our featured beekeeper is Matt Upah. He is participating in the Iowa Honey Producer mentor program. He lives with his sister, Kristen, and parents Tom and Janice Upah at Chelsea, Iowa. His family supports him with his project, however Kristen uses her camera on zoom because she doesn't want to get too close.

Matt attends South Tama High School and is in the 11th grade. He is in basketball, soccer, speech, school play, marching band, jazz band, pep band and TATU. Reading and playing sports are his hobbies. During his freshman year Matt joined the Future Farmers of American and has been a member since. After graduation, he is thinking about attending Iowa State University or the U.S. Air Force Academy. His plans are to keep his bees through his first year of college then turn them over to his mother and grandpa who are willing to give it a shot.



Dennis Nielson is Matt's mentor. Even though the wet weather conditions last year resulted in his hive not to yield any honey, Matt says his beekeeping experience has been a good one. He increased his colony number by two due to Dennis helping him capture two swarms. Matt helped at the Iowa State Fair and took his beekeeping class in Marshalltown under the instruction of Phil Ebert.

One experience Matt and Dennis had was checking out a swarm sighting in a friend's yard. Instead of honeybees, the swarm turned out to be a bunch of angry mud wasps that chased them away with their stinging.

Good luck with your beekeeping and school Matt and thanks for your story.

Submitted by Ron Wehr



(continued from page 6)

The results suggest that the bees' internal clocks were shaped by certain social cues. Jürgen Tautz, PhD, of the Julius-Maximilians Universität Würzburg in Germany, an expert in honey bee biology who was unaffiliated with the study, said it is a wonderful example of the tightly regulated interactions between genes and behavior in a bee colony. "The presence or absence of larvae switched the genes 'on' or 'off,' which guaranteed the adaptive behavior of the bees," Tautz said.

Because bees and mammals' circadian clocks are similarly organized, the question is whether the clocks of other animals also strongly depend on their social environments. The next step is to find just how social exchanges influence gene expressions. Further research into this question may have implications for individuals who suffer from disturbances in their behavioral, sleeping, and waking cycles. Research into how these rhythms may be altered and even stabilized might identify new treatment options.

Content Provided by
National Science Foundation
Where Discoveries Begin

HONEY COCOA COOKIES

Printed from COOKS.COM

- 1 c. butter
- 1 c. honey
- 2 beaten eggs
- 2 c. flour
- 1 tsp. baking powder
- 1/4 tsp. baking soda
- 1/2 tsp. salt
- 1/2 tsp. cinnamon
- 1/4 tsp. cloves
- 1/2 c. cocoa powder
- 1 c. rolled oats
- 1 c. chopped nuts

Cream butter. Add honey gradually and beat well. Add beaten eggs. Add sifted dry ingredients, rolled oats and chopped nuts and mix well.

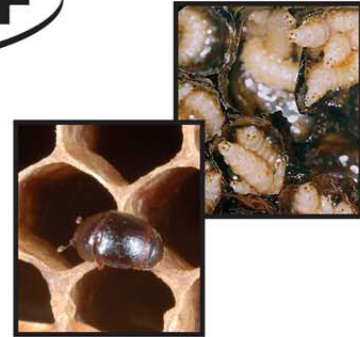
Drop from a teaspoon onto an oiled cookie sheet. Bake 12-15 minutes in 350 degree oven or just until cookies begin to brown. Makes about 6 dozen cookies.

Your ONE and ONLY “in hive” Small Hive Beetle Treatment!



Lowest Price Ever!

- CheckMite+™**
 DC-800 CheckMite+™ 100 pack.....**\$150.00**
 DC-810 CheckMite+™ 10 pack.....**\$ 19.95**



Small Hive Beetle Treatment

- Use a ground drench in addition to CheckMite+™
- Use 1 strip cut in 1/2 then attached to a 5” x 5” corrugated square. Place square strip side down on bottom board.
- Remove strips after 42-45 days

Non-Medicated 5” x 5” Plastic Squares

For use in application with CheckMite+™ in treating Small Hive Beetles.

- DC-815 Black Squares 1 - 499.....\$.35
 500+.....\$.29

GardStar®

It is important to use GardStar® as a ground drench when treating for the small hive beetle!



- DC-825 GardStar® 4 oz. bottle.....\$ 26.95
 DC-830 GardStar® quart bottle.....\$114.95

Mann Lake Ltd.

Hackensack, MN - Woodland, CA

Order anytime at
www.mannlakeltd.com
 or call
800-880-7694

Prices are subject to change without notice and do not include shipping charges.

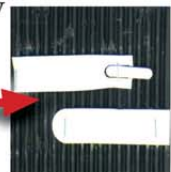
SHB Life Cycle

Eggs → Larvae → Pupae → Adult

Avoiding SHB Infestations

- Keep strong healthy hives by treating for disease and mites when appropriate.
- Feed syrup and pollen substitute to keep your hives strong when natural sources are not available.
- Use CheckMite+™ and GardStar® at the first sign of infestation.

TIP: To attract the beetles, spread a small amount of Bee-Pro® patty down the center of the square then attach the strip on either side of the patty



Varroa Treatment



- Treatment is most effective when brood rearing is lowest
- Treat all infested colonies within the yard
- Use 1 strip for every 5 frames of bees
- Remove strips after 42-45 days

For All Your Packaging Containers
For Packing Honey

(No Order Too Large or Small)

BL Plastic Containers



"We Built Our Business on
Service, Quality, and
Dependability."

Elmer C. Lynn
405 Kimberly Lane
Des Moines, IA 50327

Phone : 515-266-6112
Fax : 515-266-1112

LAPPS BEE SUPPLY CENTER

500 SOUTH MAIN STREET
REESEVILLE, WISCONSIN 53579

Beekeeping & Candlemaking
Supplies

FREE CATALOG
1-800-321-1960

"Serving the beekeeper
for 25 years"



Do you need to reach
Iowa Beekeepers?

Create a buzz of your own!

Place an ad in *The Buzz Newsletter* today.

2" x 1/2 page	\$6.00 per month
1/4 page	\$15.00 per month
1/2 page	\$30.00 per month
Full page	\$60.00 per month

Please contact The Buzz Newsletter at
thebuzz@abuzzaboutbees.com



32 YEARS SERVING USA BEEKEEPERS
MAKE US YOUR SOURCE

BEEKEEPING EQUIPMENT
CANDLEMAKING EQUIPMENT
SOAPMAKING EQUIPMENT
PACKAGE BEES
QUEENS
UNIQUE CONTAINERS
EXPERT INFORMATION

HIGH FRUCTOSE CORN SYRUP

FREE CATALOG ON REQUEST

B & B Honey Farm

5917 Hop Hollow Road
Houston, Minn. 55943



Information 1-507-896-3955
Order Line 1-800-342-4811
Fax 1-507-896-4134
Email bbhoney@acegroup.cc

Honey Containers Make the Sale!

Queenline Glass Honey Jars

Size of Jar Honey Capacity	Number of Jars Per Carton	Lid* Style (see below)	Order Number	Ship Weight Per Carton lbs.	Price Per Carton 1-99 Cartons
8 ounces	24	(48 mm)	M001952	10	\$14.00
1 pound	12	(58 mm)	M001962	8	\$8.49
1 pound	24	(58 mm)	M001972	14	\$16.30
2 pound	12	(63 mm)	M001982	12	\$12.18
4 pound	6	(G70)	M001992	10	\$11.49

Lid Style White plastic (glass not shipped by UPS)

*We reserve the right to substitute lids should the style you requested not be available.



* 8 oz. and
2 lb. bears
are also available.

**Check out our catalog for
other types and sizes of
quality honey
containers!**



M00255



M00255CPN

**Honey
Bears**

M00255 12 oz. Regular Bears
with Cap and Collar (38mm) Cartons of 12
Case of 12 Ship Wt. 3 lbs. \$6.95

M00255CPN 12 oz. Clear Bears
with Cap and Collar (38mm) Cartons of 12
Case of 12 Ship Wt. 3 lbs. \$7.95

M00256 Bulk Pack - 250 per case
1-4 Cases 250 per case . . \$86.95 per case
5 & Up Cases \$84.45 per case
Ship wt. 30 lbs. per case

M00256CPN 12 oz. Clear Panel Bears
with Cap and Collar (38mm)

1-4 Cases \$105.95 per case
5 & Up Cases \$99.95 per case
Ship wt. 30 lbs. per case

3 lb. and 5 lb. Plastic Honey Jugs

Great Containers for Packing Yard Rent Honey

With 38mm Yellow Ratchet
Style Lids

3 lb. Jugs

150 Jugs per Case

M00280 Ship Wt. 70 lbs. per Case
1-5 Cases \$79.30 per Case
6 & Up Cases . . . \$76.20 per Case

5 lb. Jugs

120 Jugs per Case

M00281 Ship Wt. 70 lbs. per Case
1-5 Cases \$79.30 per Case
6 & Up Cases . . . \$76.20 per Case



Glass 3 lb. Round Jars

Carton of 12 with white plastic lids
M001932

1-99 \$13.50 per Carton

(All Ship Wts. 12 lbs. per carton.)



1 lb.
M01158

Closeup of Pattern



Inverted Plastic Jar With Hexagon Pattern

Inverted Plastic Honey Jar
With Hexagon Pattern
with 38mm Snap Caps

Jar Size	No. of Jars Per Ctn.	Item Number	Ship Wt. Per Ctn. lbs.	Price Per Ctn. 1-99 Cartons
1 pound	24	M01158	3	\$16.99

1 lb. and 2 1/2 lb. Attractive Plastic Containers

With Honey
Bee Emblem



Carton of 24 -1 lb.
Container with plastic lids (43 mm)

M002042

1-99 \$10.94 per Carton

Carton of 6 -2 1/2 lb.

Containers with plastic lids (58 mm)

M002052

1-99 \$5.32 per Carton

(Ship Wts. 3 lbs. per carton.)



Dadant Iowa Branch

1318 11th St.
Sioux City, IA 51102

Phone 712-255-3232
Fax 712-255-3233
Toll-free orders 1-877-732-3268

Illinois Office
51 S.2nd St.
Hamilton, IL 62341

1-888-922-1293

Order on-line at:

<http://www.dadant.com>

Call for Pricing on 100+ Cartons

All prices are FOB, Hamilton, Illinois

Note: Plastic containers may ship at individual weights listed not combined weights.
All prices are subject to change.

The Buzz Newsletter

Iowa Honey Producers Association
207 S.E. Diehl
Des Moines, IA 50315

RETURN SERVICE REQUESTED

ISSUE 9 – September 2010



PRSR STD
U.S. POSTAGE PAID
DES MOINES, IA
PERMIT NO.
4271



Officers

President : Donna Brahms
14922 535th Street
Griswold, IA 51535
(712) 778-4255 home
(712) 778-4256 orchard line
mbrahms@netins.net

Vice President: Pat Randol
2505 Carriage Trail
Winterset, IA 50273
(515) 210-7445
Pat.Randol@RandolHoney.com

Secretary: Mary Ebert
705 Hwy. #1 West
Iowa City, IA 52246
(319) 354-6696
Mebert@netins.net

Treasurer: Melanie Bower
207 S.E. Diehl
Des Moines, IA 50315
(515) 287-6542
melrb@msn.com

Historian: Peggy Ennis
1040 Union Ave.
Goodell, IA 50439
(641) 444-4767

Past President: Curt Bronnenberg
1433 Hull Ave.
Perry, IA 50220
(515) 465-5939
CBronny823@aol.com

District Directors

District #1 Kristoffer Valleroy, Sr.
1638 W 35th St.
Davenport, IA 52806
(563) 320-1488
kvalleroyr@yahoo.com

District #2 Louise Johnson
34147 310th St.
Guttenberg, IA 52052
(563) 252-2340
LouiseJ@alpinecom.net

District #3 Matt Stewart
2956 170th St.
South Amana, IA 52234
(319) 662-4145

District #4 John Johnson
3422 Clinton Court
Ames, IA 50010-4371
(515) 450-5606
wjohnq@aol.com

District #5 Jack Trowbridge
20041 235th Street
Decatur, IA 50067
(641) 446-3123

District #6 Larry Boernsen
6724 200th Street
Ocheyedan, IA 51354
(712) 735-4205
lm5kbees@iowatelecom.net

State Apiarist

Andrew Joseph (515) 725-1481
andrew.joseph@iowaagriculture.gov

Back-to-Basics Beekeeping Club

Contact: Eves Cadwallader
2420 285th St.
Oskaloosa, IA 52577
(641) 673-3993
weic@kdsi.net

Central Iowa Beekeepers Association

Contact Arvin Foell
30930 530th Ave.
Kelley, IA 50134
Home phone 515/597-3060
Cell phone 515/450-9494
ajfoell@huxcomm.net

Des Moines Backyard Beekeepers

Contact: Julia McGuire
jcammcguire@yahoo.com

IDALS website
www.agriculture.state.ia.us

National Honey Board
www.honey.com



Iowa Beekeeper Clubs

East Central Iowa Beekeepers

Contact: Dave Irvin
2254 S. Riverside Dr.
Iowa City, IA 52246
(319) 351-6205

North Iowa Bee Club

Contact: Pat Ennis
1040 Union Ave.
Goodell, IA 50439
(641) 444-4767
Flat_Lander@lycos.com

Northeast Iowa Beekeepers

Contact: Louise Johnson
34147 310th St.
Guttenberg, IA 52052
(563) 252-2340
LouiseJ@alpinecom.net

Additional Links and Emails

American Beekeeping Federation website
www.ABFnet.org

Queen Co-Chairs

Regina Jager (641) 660-0772
Louise Johnson (563) 252-2340

Northwest Iowa Beekeepers

Contact: Larry J. Boernsen
6724 200th St.
Ocheyedan, Iowa 51354
(712) 735-4205
Lm5kbees@iowatelecom.net

Southeast Iowa Beekeepers

Contact: Vernie Ramsey
22781 Route J16
Birmingham, IA 52535
(319) 498-4355
Vdramsey@netins.net

Southwest Iowa Honey Producers

Contact: Mike & Donna Brahms
14922 535th Street
Griswold, IA 51535
(712) 778-4255

Friendly Beekeepers of Iowa

Contact: Judy Spence
12839 Carpenter Trail
Carlisle, IA 50047
(515) 988-8397
jespencejr44@gmail.com

Robert Haxton
Food Processing Plants
Iowa Dept. of Inspections and Appeals
rhaxton@dia.state.ia.us